







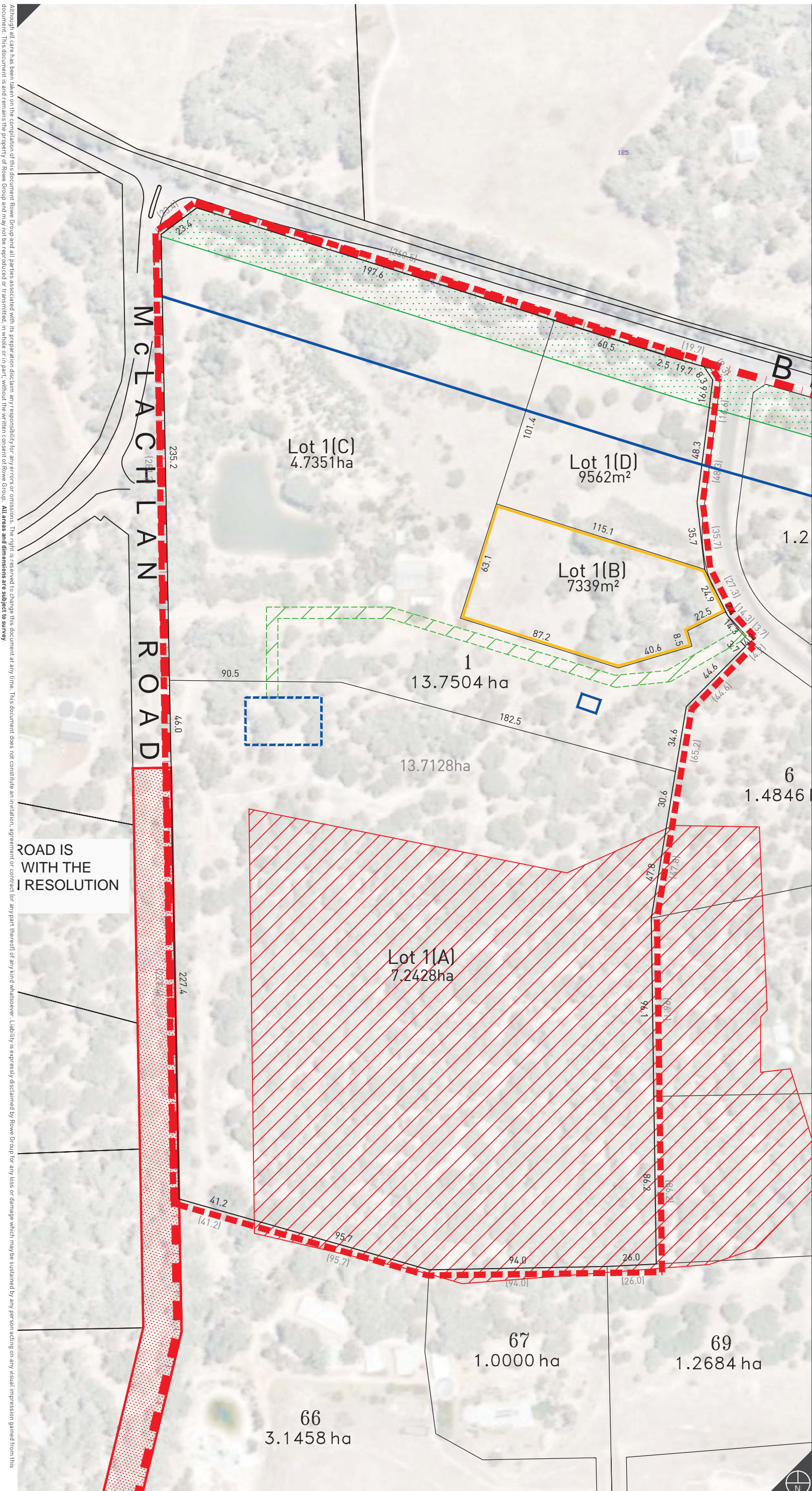


LEGEND

-  Pedestrian Access Way or Strategic Fire Break
-  30 Metre Revegetation Buffer / Effluent Disposal Setback
-  Building Exclusion
-  Building Setback / Landscape buffer
-  Subject Site
-  20m Revegetation / Landscape Buffer
-  Indicative Build Zone
-  Public Purpose (Fire Station)
-  NBN Lease Area
-  Indicative Easement (Vehicular Access)



Although all care has been taken on the compilation of this document Rowe Group and all parties associated with its preparation disclaim any responsibility for any errors or omissions. The right is reserved to change this document at any time. This document does not constitute an invitation, agreement or contract for any part thereof or any kind whatsoever. Liability is expressly disclaimed by Rowe Group for any loss or damage which may be sustained by any person acting on any visual impression gained from this document. This document is and remains the property of Rowe Group and may not be reproduced or transmitted, in whole or in part, without the written consent of Rowe Group. All areas and dimensions are subject to survey.



REVISIONS

Rev	Date	Drawn
A	2015.11.16	W. Clements
B	2015.11.19	W. Clements
C	2015.11.27	W. Clements



w: www.rowegroup.com.au  
 e: info@rowegroup.com.au  
 p: 08 9221 1991

Date Drawn: 2015-11-16  
 Job Ref: 4585  
 Scale: 1:2000 @ A3  
 Client: Moondust Corporation Pty Ltd  
 Designer: A. Lohman  
 Drawn: W. Clements  
 Projection: N/A  
 Plan ID: 4585-FIG-08-C  
 Aerial Photography captured and supplied by Nearmap

# Indicative Eastment

## Strata Plan 35452 Biddle Road Quindalup