

Airport Advisory Committee

23 September 2015



WA Regional Airport Landing Fees 2015/16

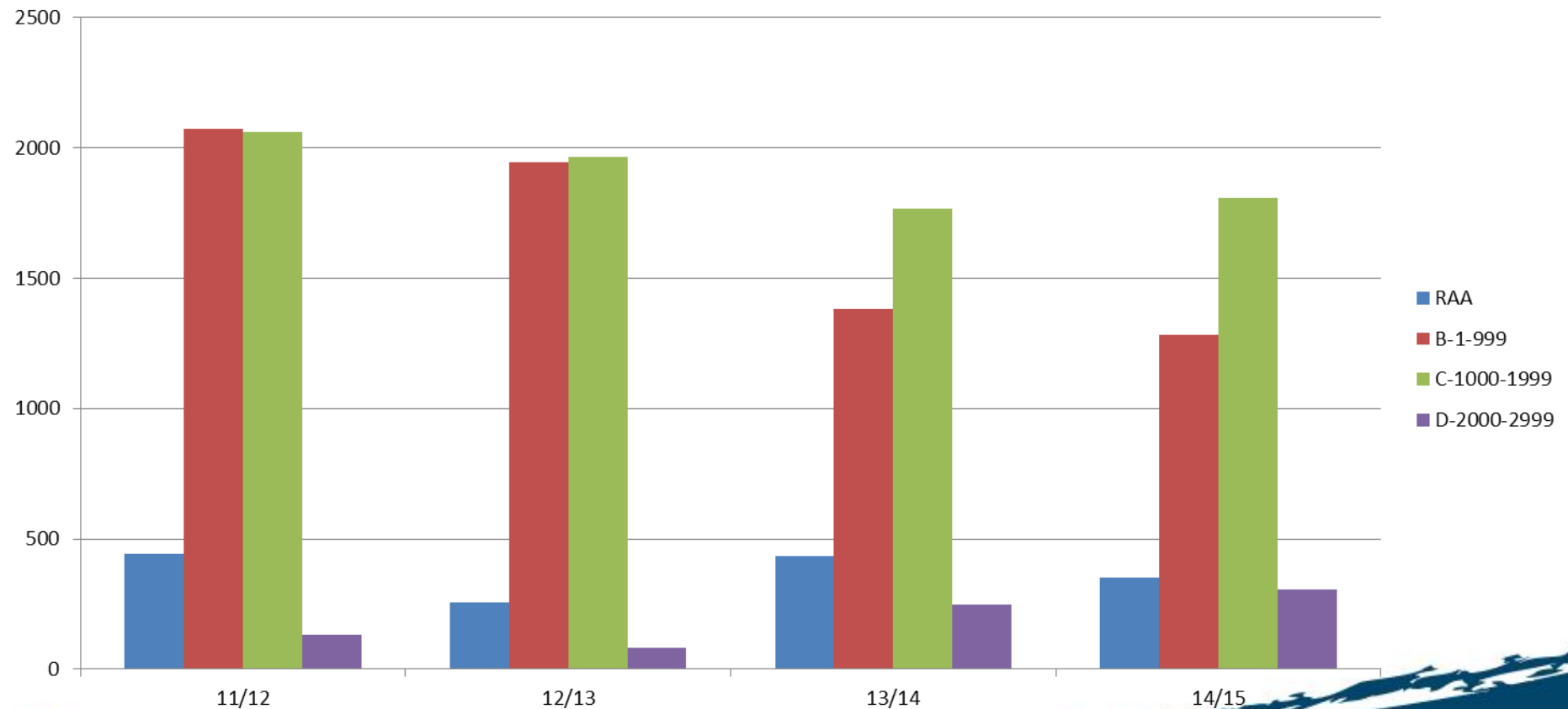
- Busselton – 0-999kgs \$4.09 ff; 1000-1999kgs \$7.73ff
- Albany - <1500kgs \$10.64/t per day
- Broome - <5000kgs \$22.96/t
- Bunbury - Nil
- Esperance - <2000kgs \$10.64 ff
- Geraldton - 1001-5000kgs \$15.46/t
- Jandakot - min charge \$12.41
- Kalgoorlie - > 1000kgs \$12.71/t
- Karratha - <5700kgs \$5.18/t
- Kununurra - all aircraft \$26.36/t
- Port Hedland – all aircraft \$21.63/t

ff = flat fee



Total BRA Aircraft Landings 2011-2015

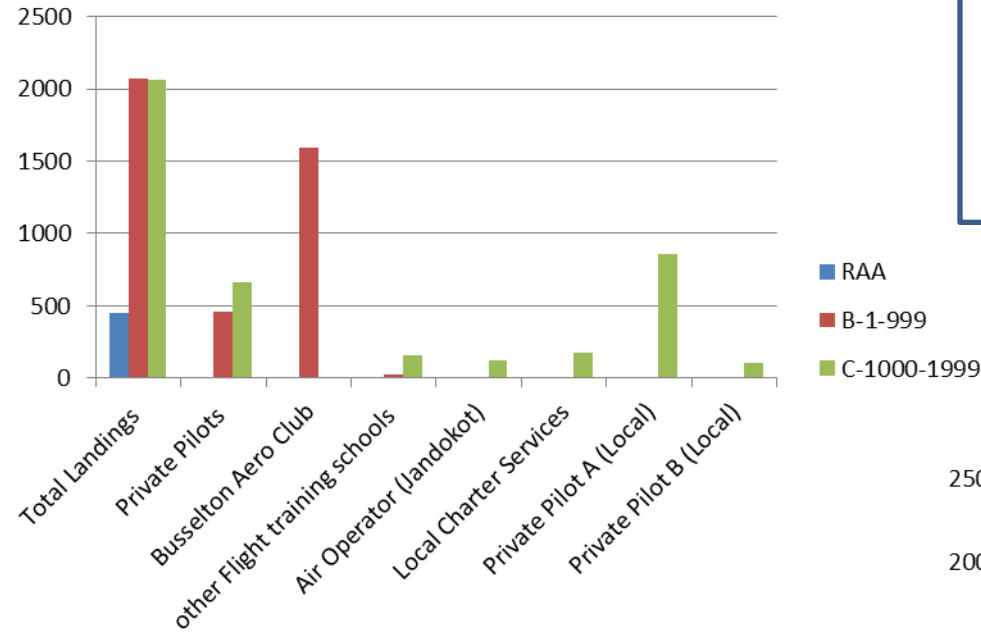
All Aircraft Landings by MTOW



Aircraft landings based on CTAF radio calls, includes missed approaches and touch & go's for aircraft < 3000kgs MTOW

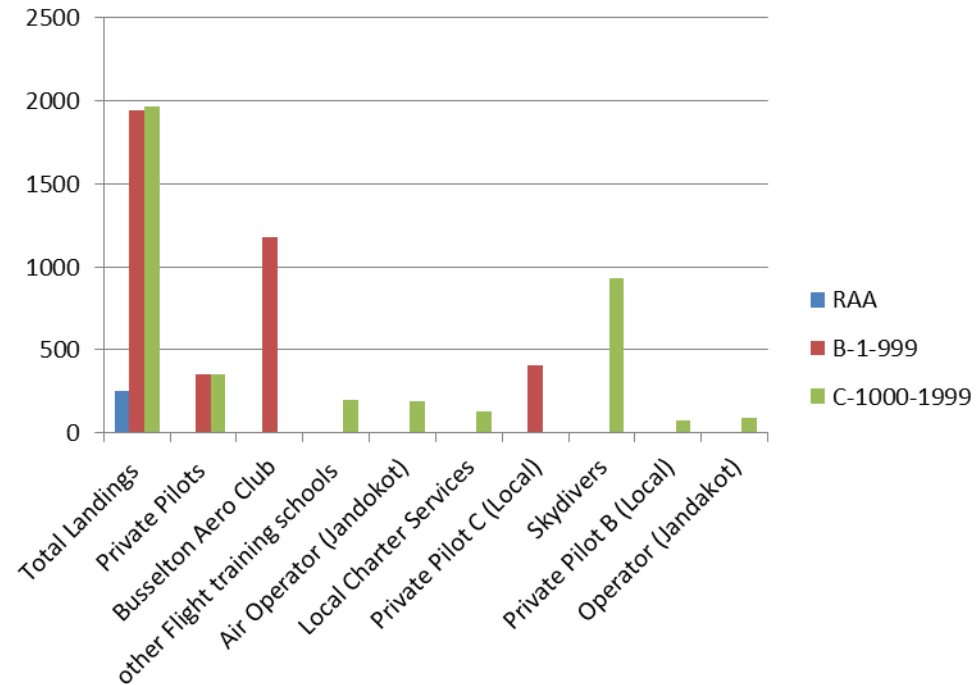
Aircraft Landings

Aircraft Landings 2011/2012



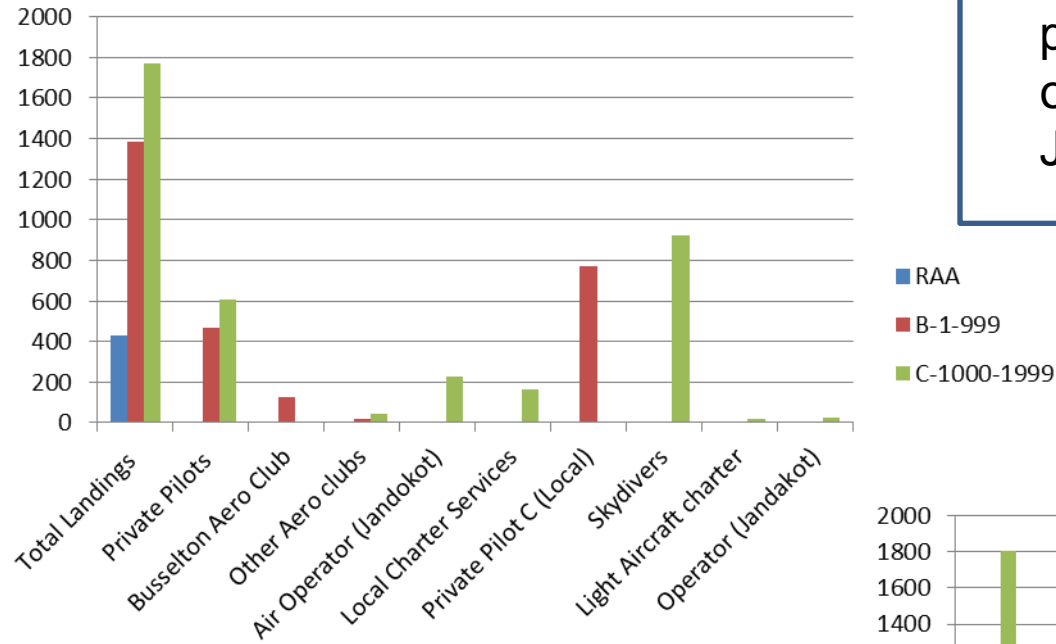
Aircraft landings by different users, private pilots with high BRA usage or frequent air operators (local & Jandakot based)

Aircraft Landings 2012/2013



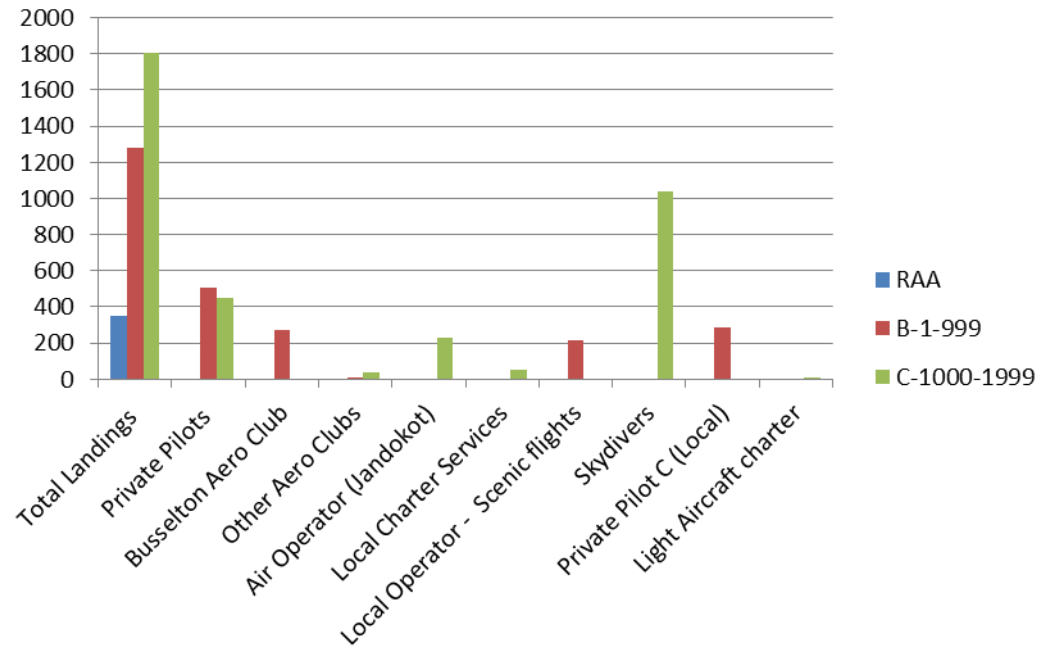
Aircraft Landings

Aircraft Landings 2013/2014



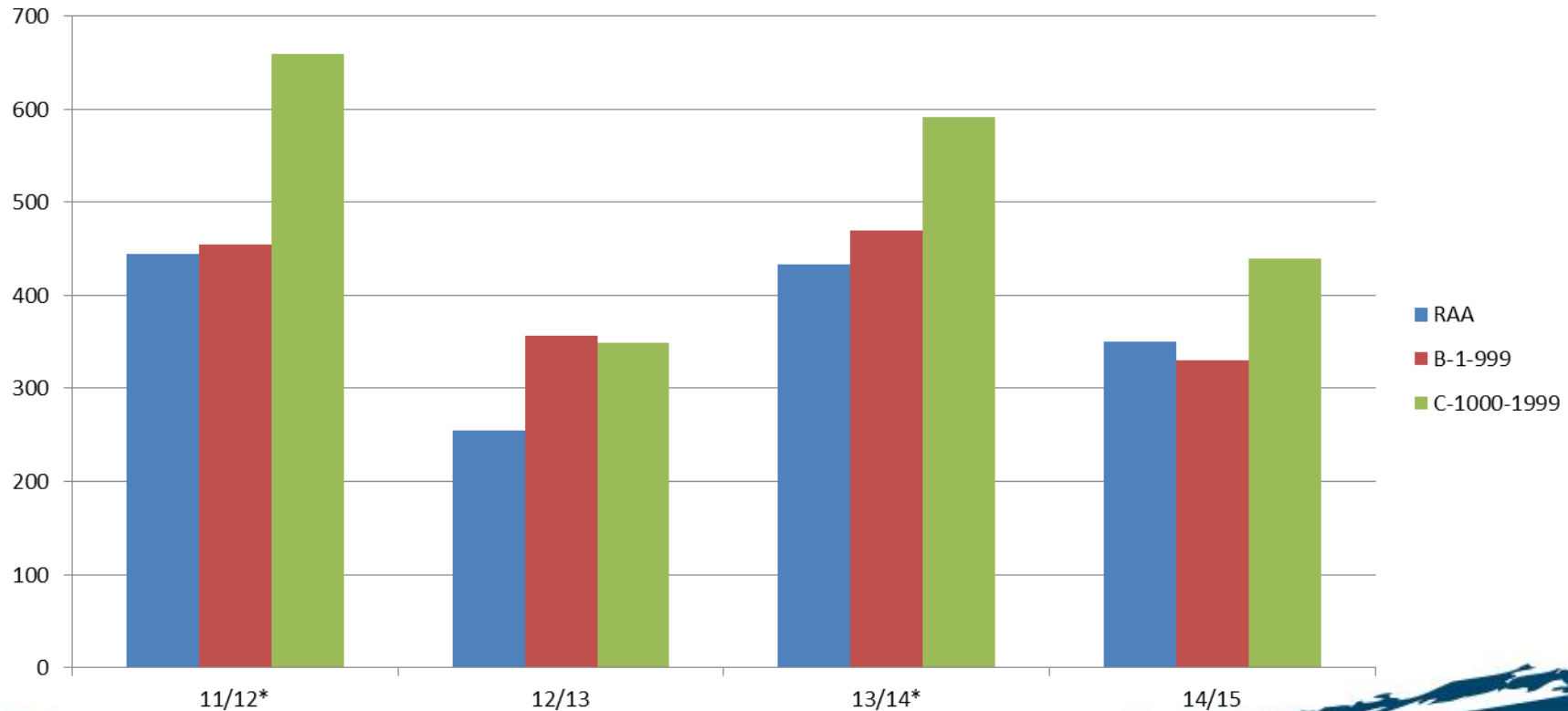
Aircraft landings by different users, private pilots with high BRA usage or frequent air operators (local & Jandakot based)

Aircraft Landings 2014/2015



Aircraft Landings

Estimated Individual / Private Pilots by MTOW category

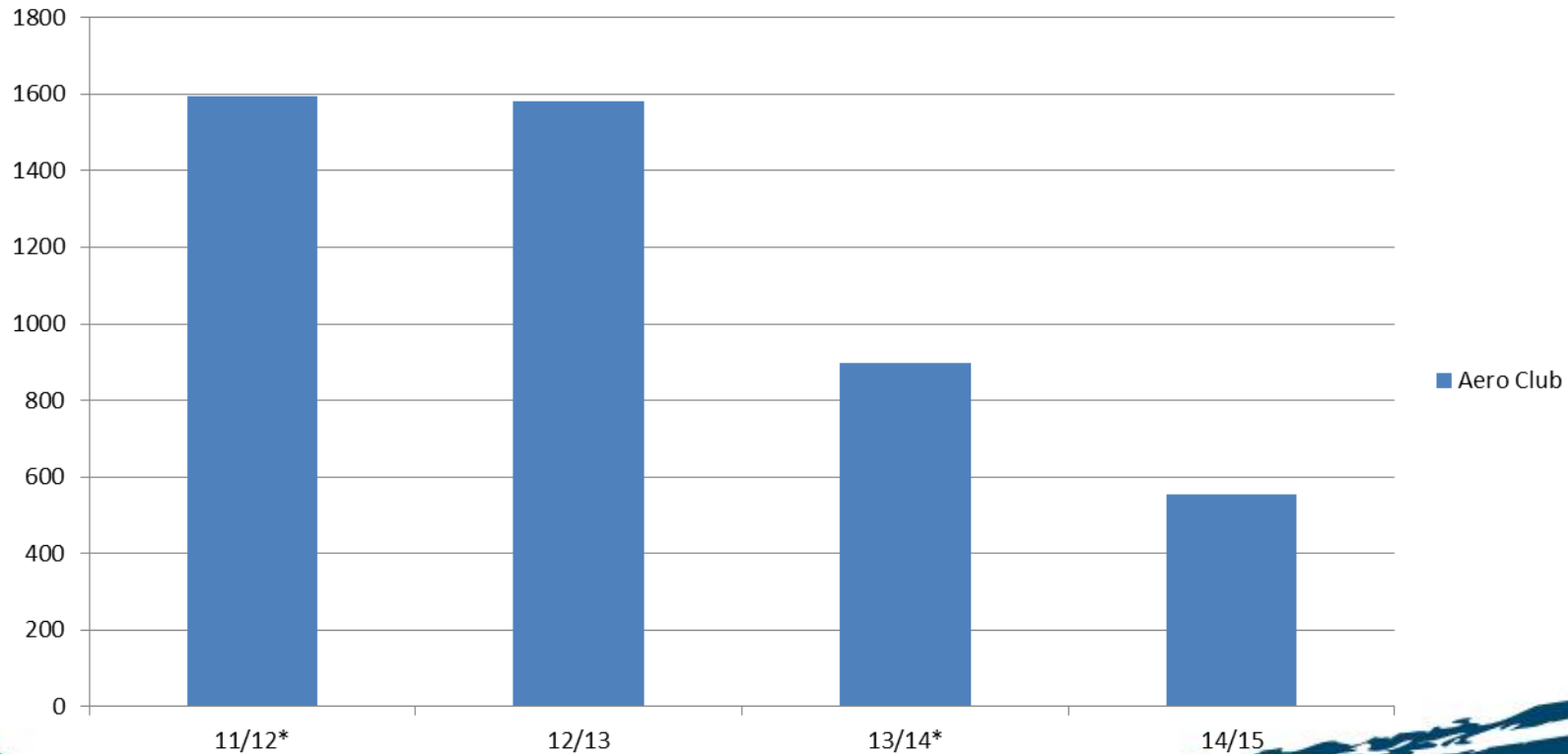


Aircraft Landings by private, light aircraft pilots, where total number of landings per annum < 50 landings, excluding Aero Club registered aircraft.



Aero Club Landings

Aero Club Landings

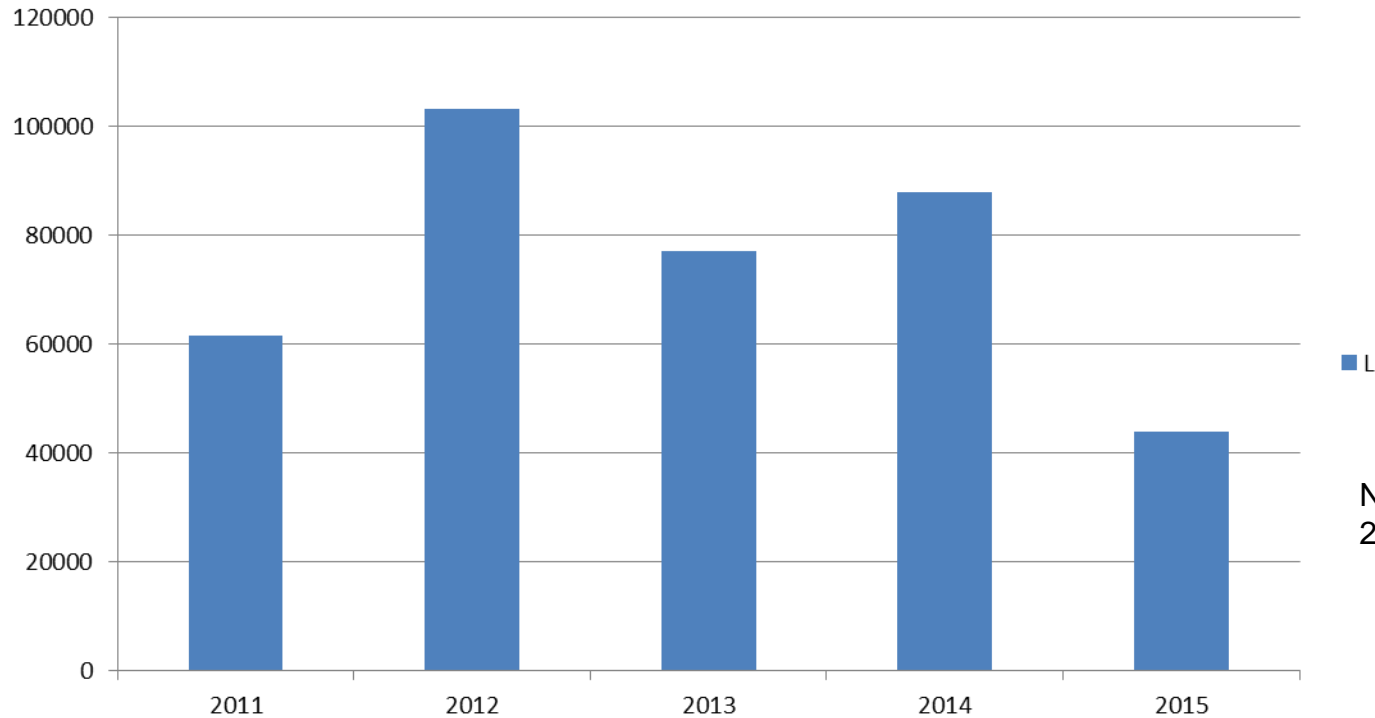


Aero Club registered aircraft landings only.



Avgas Sales 2011-2015

AvGas Average L Sold / Year



Note: 2015 Sales to May only;
2012 & 2014 Aerofest years.

Avgas sales based on L, data collated from Aero Club fuel invoices received by the City of Busselton.



Thank you

End of Presentation

